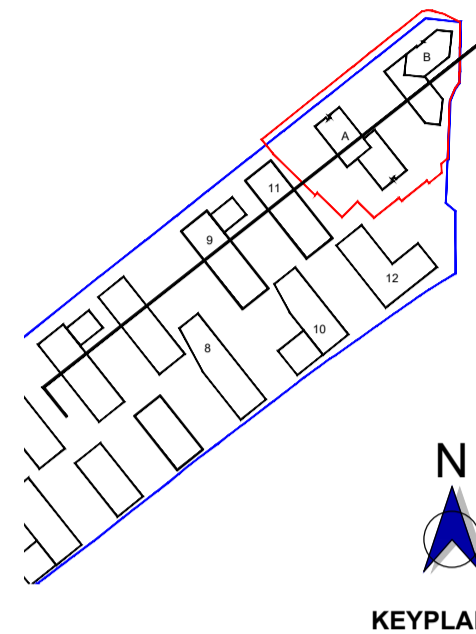


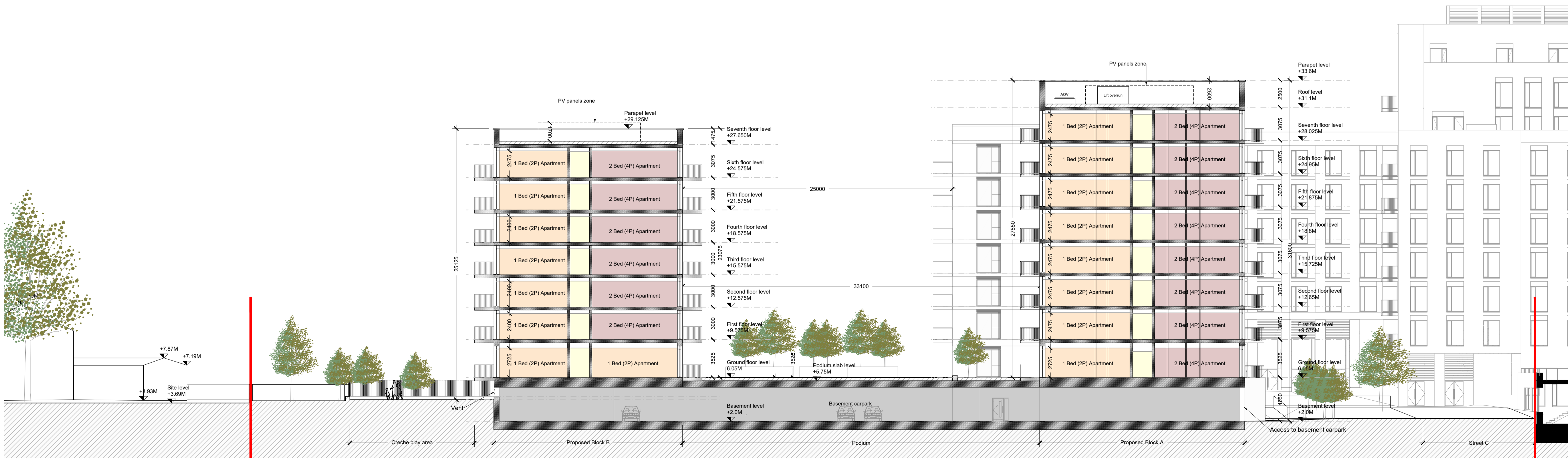
1 PROPOSED CONTIGUOUS SECTION
CENTRAL PARK ROAD SECTION
SCALE 1:500 @A1

- GENERAL NOTES
1. COPYRIGHT RESERVED
 2. DO NOT SCALE DRAWING. USE FIGURED DIMENSIONS ONLY.
 3. ALL DIMENSIONS ARE TO BE REPORTED TO ARCHITECT
 4. THE CONTRACTOR IS RESPONSIBLE FOR CHECKING ALL LEVELS AND DIMENSIONS
 5. ALL STRUCTURE TO BE TO STRUCTURAL ENGINEERS DETAILS
 6. ALL MECH & ELEC SERVICES TO SERVICES ENGINEERS DETAILS
 7. ALL PROPRIETARY ITEMS TO BE INSTALLED IN ACCORDANCE WITH MANUFACTURERS INSTRUCTIONS
 8. CONTRACTOR IS RESPONSIBLE FOR THE COORDINATION OF STRUCTURE FINISHES AND SERVICES

REV	DATE	DESCRIPTION	BY
A	13.11.24	ISSUED FOR PLANNING	LR



- LEGEND
- Site Boundary
 - Ownership Boundary
 - Circulation
 - 1 Bed apartment/2 Persons
 - 2 Bed apartment/4 Persons
 - Car Parking



2 PROPOSED CONTIGUOUS SECTION
CENTRAL PARK ROAD SECTION
SCALE 1:200 @A1



THE TREE HOUSE, 17 RICHVIEW OFFICE PARK
CLONSKEAGH, D14 XR82, IRELAND
T: (01) 6689888 E: info@jfa.ie W: www.jfa.ie

CLIENT
Marina Quarter Ltd.

PROJECT
Former Ford Distribution Site
Centre park road, Cork City

DRAWING
Proposed Contiguous Section
Central Park Road section

SCALE 1:500 / 1:200 @ A1
JOB NO. 2361
DRAWN BY JM + CF
DATE 13.11.2024
DRAWING NUMBER
FRD_00_ZZ_DR_JFA_AR_P5000_A
REVISION

DRAWING LOCATION
w:\02\pba\2361\00-current drawings

DRAWING STATUS
PLANNING